



Demonstrate the Value of Your Library with a Platform That:

- Delivers a central dashboard with key metrics
- Provides quantitative evidence to inform collection development
- Connects library engagement to broader campus metrics
- Adheres to data security legal agreements, standards and practices

Panorama™ - Insights Through Analytics

Panorama is a modern library analytics platform combining different library and campus data sets to enable insights that were not possible until now. The platform features visualization tools and a central dashboard to collect, manipulate and display data about the library and the users it serves.

Get On-Demand Insights for Collections and Services

Automate the pull of data from siloed sources and merge different data sets into one platform. Connect data from ILS, COUNTER, Authentication, Student Information Systems and more.

Identify What Stays, Goes and What is Needed

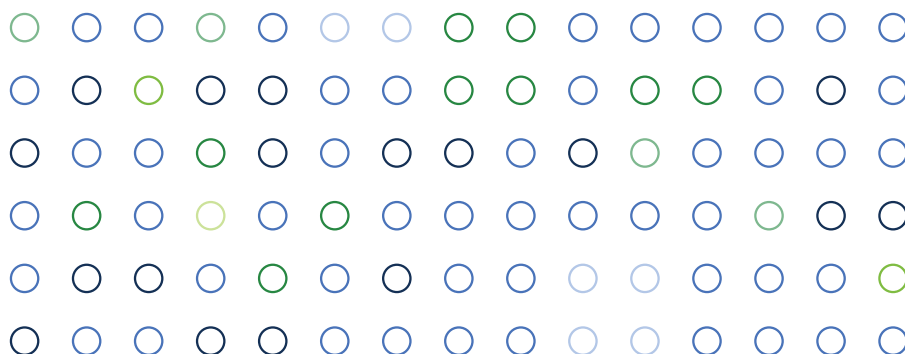
Access quantitative evidence to make data-informed purchasing decisions in support of new programs and identify what needs to be justified or cut.

Spot Trends, Save Time

Save staff time with a centralized place to analyze loans, renewals, e-resource usage, physical collection counts by content type, funds by subject area, circulation statistics and more.

Customize Data Needs

Customize your data choices to align the platform to your library's mission and needs. Enjoy the flexibility in selecting your data sources.



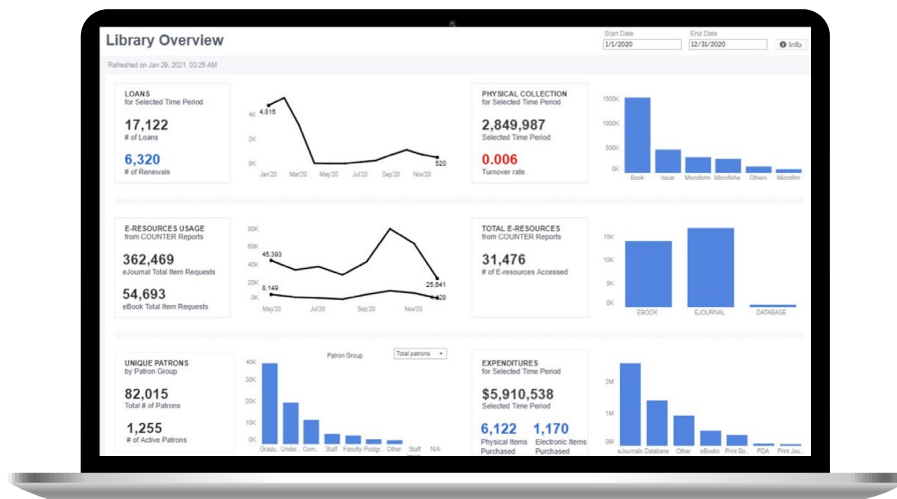
SOFTWARE AS A SERVICE



Panorama Features:

- A self-service platform for data discovery
- Default and custom visual dashboards
- Real-time data connections
- Customizable data sources
- Automated data feeds with import/export capabilities
- Hosted data lake and data warehouse to aggregate all data into a single repository
- Extends to non-library data sources

The Next Generation of Library Analytics is Here



Dashboard Driven

Visual dashboards mean you can spot trends, easily report on and analyze your library's data in a matter of minutes.

High-level dashboard examples include:

- Authentication Analytics
- ACRL
- Cost-Effective Analysis
- Collection Budget Analysis
- Collection Development
- Discovery
- E-Resource Usage
- Print Circulation
- Student Outcome Metrics

